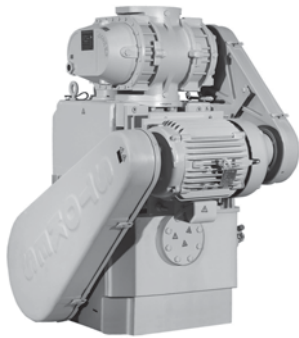


MB/MV Series Vertically Oriented Booster Combinations



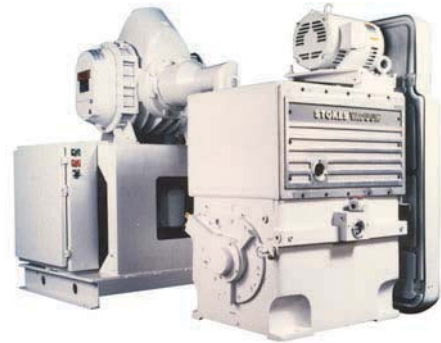
Overview

Edwards multi-stage pumping systems, backed by over a century of in-depth applications knowledge and technical experience.

These compact, efficient pumping systems feature a Stokes microvac pump and rugged, proven Stokes 6" Series boosters or the Edwards EH series with patented hydrokinetic drive. MB series configurations are comprised of the Stokes 412J piston pumps coupled with a model 607 mechanical booster. The configuration has the ability to start at atmospheric pressure without the need for a pressure switch, packages are offered as a cost-effective alternative for low to medium range capacity requirement.

The MV Series Mechanical Booster Pump Packages comprises of either the Stokes 212J or 412J rotary piston pump. Each can be directly coupled with a range of mechanical booster pumps. The range includes Edwards EH series offering the patented Hydrokinetic Drive or the full range of Stokes 6" series. All are vertical gas flow orientation for a compact space saving design. The MV Series offers a broad selection of configurations which enables the flexibility to mix and match the complete range of Stokes Microvac accessories along with various electrical control options. This enables the user to customize the pumping package to meet their application requirements.

1700 Series High Capacity Mechanical Booster Pump Combinations



Overview

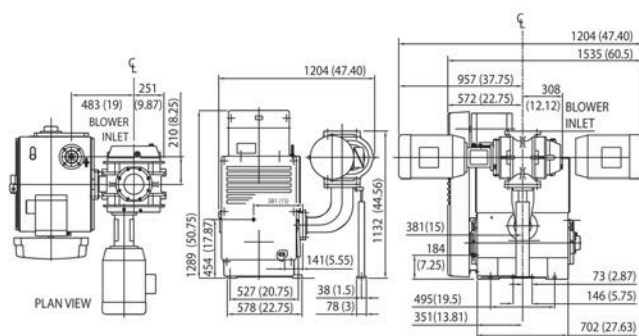
Whether you need to increase the capacity of your existing system or achieve peak performance for a new installation; Edwards makes taking advantage of the latest technology easy. These field-proven pumping systems are the workhorse of countless industrial and large chamber applications. Each Stokes 1700 series mechanical booster combinations includes a Stokes microvac backing pump and a belt driven, Stoke 6" series mechanical booster pump horizontal flow. In harsh applications where chemical or particulate contamination is present, process isolation boosters are available as an option. Controls for Stokes 1700 series mechanical booster combinations include a pressure switch, motor starters, fuses and overload.

The Stokes 1700 series combinations deliver the high capacity needed to achieve faster pump-downs. Most importantly, these systems achieve the task more cost effectively than larger single stage pumps. Depending on the specific application, they can improve blank-off by a factor of ten over large, single stage pumps. Pumping capacities range from 1300 to 7880 ft³min⁻¹.

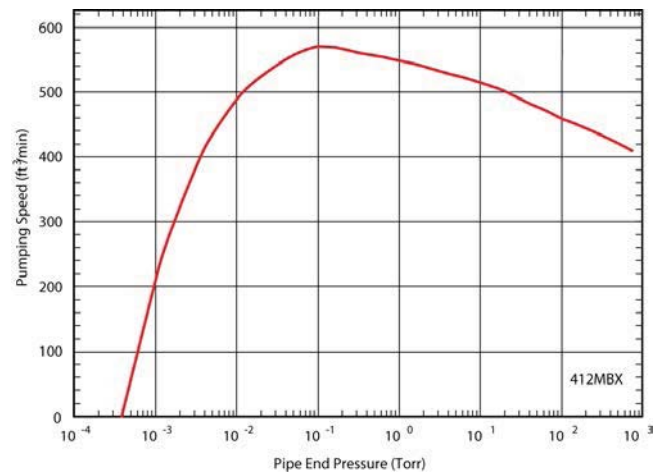


Stokes MB Multi-stage pumping systems are available in two options, consisting of a Microvac piston pump and a Stokes 607 mechanical booster pump. The compact direct mounted packages provide high performance pumping from atmosphere. The MB systems are ideal for high cycling arduous applications.

Dimensions



Performance Curves



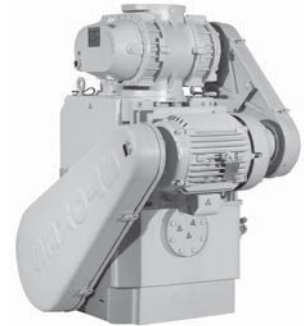
Technical Data

Blower displacement (swept volume) (AVS)	1040 m ³ h ⁻¹ / 612 ft ³ min ⁻¹
Pump displacement (swept volume) (AVS)	510 m ³ h ⁻¹ / 300 ft ³ min ⁻¹
Blower motor size	15 kW / 20 hp
Microvac motor size	7.5 kW / 10 hp
Blower motor	1800 rpm
Microvac motor	1800 rpm
Inlet connection	6 inch ASA/ANSI flange
Exhaust connection	3 inch ASA/ANSI flange or 3 inch NPT
Microvac water inlet/outlet connection	½ inch NPT
Recommended cooling flow @ 30 °C/85 °F	7.6 lmin ⁻¹ / 1 US galmin ⁻¹
Booster oil capacity	4.2 litre / 22 US gal
Microvac oil capacity	46 litre / 12 US gal
Booster recommended oil	V lube H
Microvac recommended oil	V lube F
Dimensions (L x W x H)	973 x 1022 x 1365 mm 47 x 55.69 x 51.75 inch
Height to inlet	868 mm / 34.19 inch
Weight	1202 kg / 2650 lbs

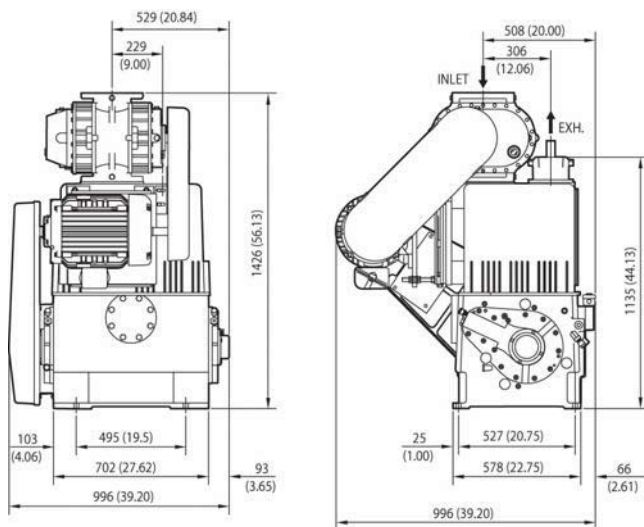
Ordering Information

Product description	Order no.
412MBX Multi-stage Pumping System 230/460V, 3Ø, 60 Hz with 230/460V Coil	900412072
Accessories Spares	Order no.
Replacement parts kit	429638015
Bearings	085019757
Valve deck assembly	607417001
Replacement 6" booster Mseal - seal kit	607552001
Replacement 6" booster - maintenance kit	607552002
Replacement parts kit for 412H pump	429638012

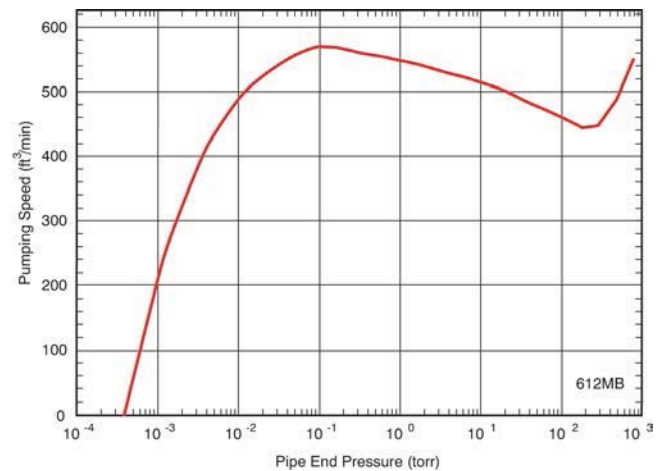
Stokes MB Multi-stage pumping systems are available in two options, consisting of a Microvac piston pump and a Stokes 607 mechanical booster pump. The compact direct mounted packages provide high performance pumping from atmosphere. The MB systems are ideal for high cycling arduous applications. The 612MB Multi-stage pumping systems incorporate an integral bypass valve which offers increased speed at atmospheric pressure.



Dimensions



Performance Curves



Technical Data

Blower displacement (swept volume) (AVS)	1040 m ³ h ⁻¹ / 612 ft ³ min ⁻¹
Pump displacement (swept volume) (AVS)	510 m ³ h ⁻¹ / 300 ft ³ min ⁻¹
Pressure switch required	No
Blower motor size	15 kW / 20 hp
Motor	1800 rpm
Inlet connection	6 inch ASA/ANSI flange
Exhaust connection	4 inch NPT
Microvac water inlet/outlet connection	½ inch NPT
Recommended cooling flow @ 30 °C/85 °F	7.6 lmin ⁻¹ / 2 US galmin ⁻¹
Booster oil capacity	4.7 litre / 7 US gal
Microvac oil capacity	46 litre / 12 US gal
Booster recommended oil	V lube H
Microvac recommended oil	V lube
Dimensions (L x W x H)	1181 x 1022 x 1434 mm 47 x 55.69 x 51.75 inch
Height to inlet	1434 mm / 56.44 inch
Weight	1452 kg / 3200 lbs

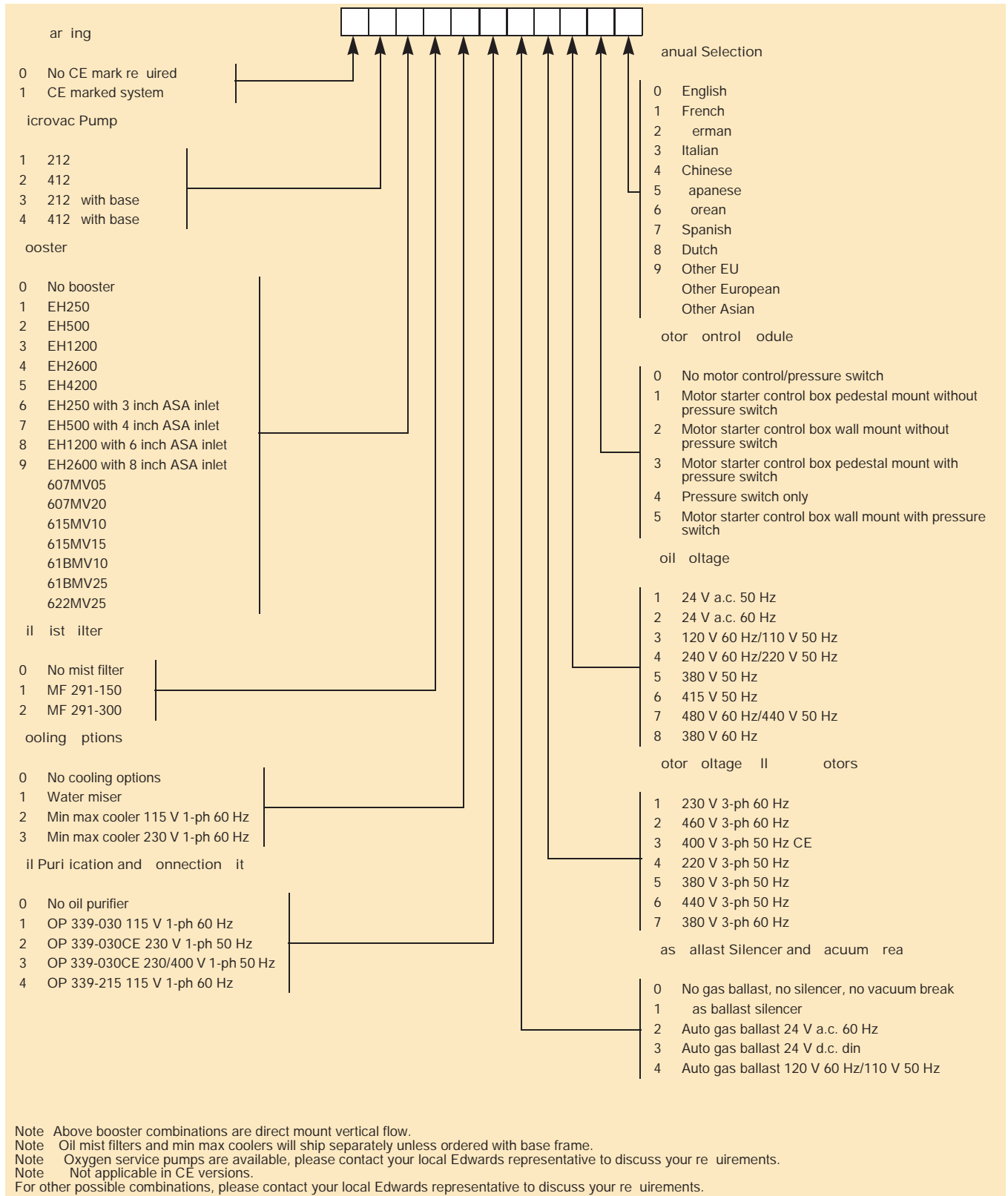
612 MB incorporates double shafted single motor

Ordering Information

Product description	Order no.
612MBX Multi-stage Pumping System 230/460V, 3Ø, 60 Hz with 230/460V Coil	900612 30
Accessories Spares	Order no.
Replacement parts kit	429638015
Bearings	085019757
Valve deck assembly	607417001
Replacement 6" booster Mseal - seal kit	607552001
Replacement 6" booster - maintenance kit	607552002

Series 11 Sealed Piston Pumps and Mechanical Booster Combinations

Ordering Information

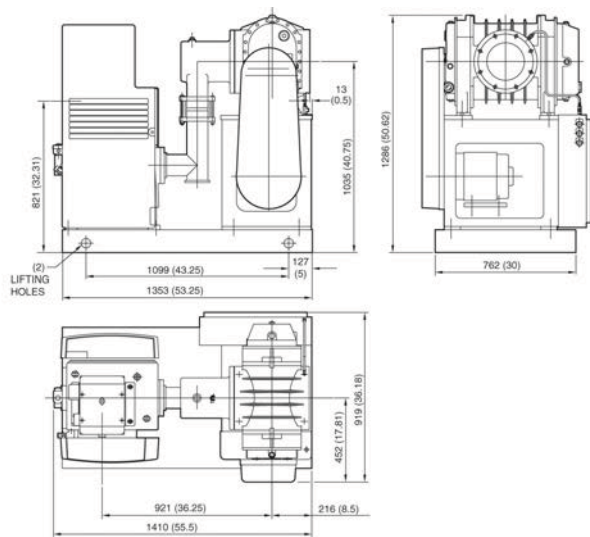


Stokes 1721 Mechanical Booster Pump Combination

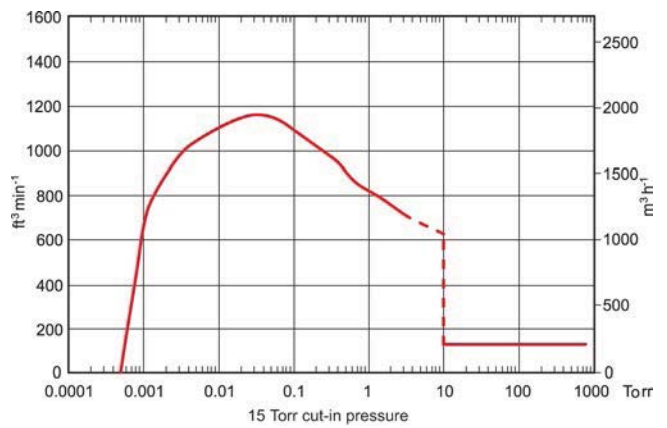
Whether you need to increase the capacity of your existing system or achieve peak performance for a new installation Edwards makes taking advantage of the latest technology easy. These field-proven pumping systems are the workhorse of countless industrial and large chamber applications. Each Stokes1700 series mechanical booster pump combination includes a Stokes Microvac backing pump and a belt driven, horizontal flow, high vacuum Stokes 6 series mechanical booster pump. In harsh applications where chemical or particulate contamination is present, process isolation boosters are available as an option. Controls for Stokes 1700 series mechanical booster pump combination include a pressure switch, motor starters, overloads, remote booster selection switch and lights for pump running and fault indication.



Dimensions



Performance Curves



Technical Data

Booster displacement	2210 m ³ h ⁻¹ / 1300 ft ³ min ⁻¹
Booster speed	1800 rpm
Booster orientation	Horizontal
Pump displacement	255 m ³ h ⁻¹ / 150 ft ³ min ⁻¹
Pressure switch required	Yes
Normal cut-in pressure	20 mbar / 10 Torr
Continuous operation pressure limit	4 mbar / 3 Torr
Booster drive	5.6 kW / 7.5 hp
Pump drive (TEFC)	5.6 kW / 7.5 hp
Inlet connections	8 inch ASA/ANSI flange
Discharge connections	2 inch ASA/ANSI flange, 2 inch NPT
Water inlet/outlet connection	½ inch NPT
Recommended cooling flow @ 30°C/85 °F	5.7 lmin ⁻¹ / 1.5 galmin ⁻¹
Booster oil capacity (V lube H)	1.9 litre / 0.51 US gal
Microvac oil capacity (V lube F)	15 litre / 4 US gal
Inlet height	1035 mm / 40.75 inch
Footprint (L x W x H)	1419 x 919 x 1260 mm 55.87 x 36.18 x 49.61 inch
Weight	1225 kg / 2700 lbs

Ordering Information

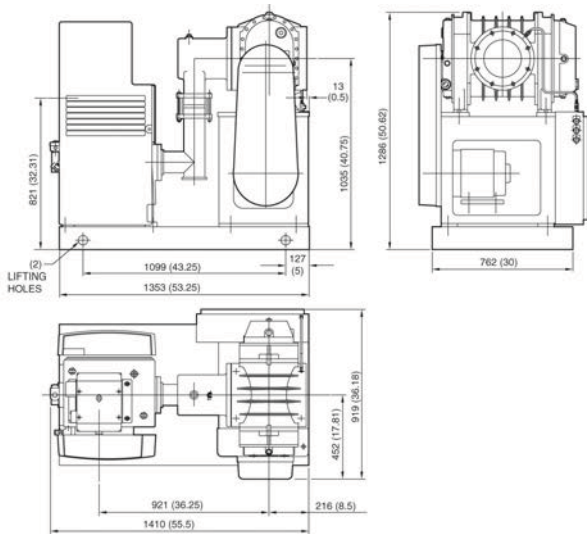
Product description	Order no.
1721 230/460V, 3-ph, 60Hz (230/460V Coil)	900170061
Accessories Spares	Order no.
Replacement parts kit	429638016
Bearings	085019757
Valve deck assembly	607417001
Replacement 6" booster Mseal - seal kit	607552001
Replacement 6" booster - maintenance kit	607552002

Stokes 1721S Mechanical Booster Pump Combination

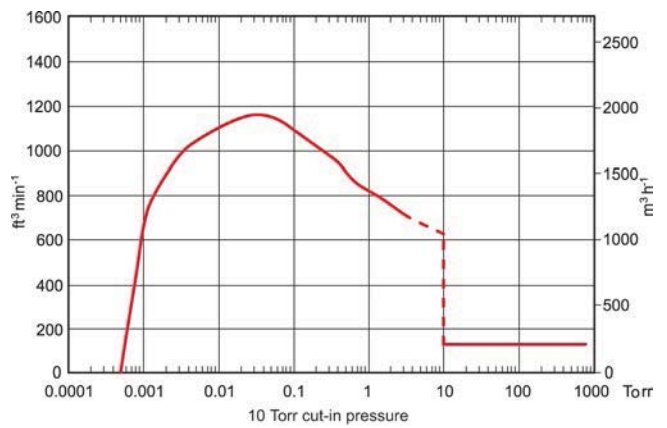


Whether you need to increase the capacity of your existing system or achieve peak performance for a new installation Edwards makes taking advantage of the latest technology easy. These field-proven pumping systems are the workhorse of countless industrial and large chamber applications. Each Stokes 1700 series mechanical booster pump combination includes a Stokes Microvac backing pump and a belt driven, horizontal flow, high vacuum Stokes 6 series mechanical booster pump. In harsh applications where chemical or particulate contamination is present, process isolation boosters are available as an option. Controls for Stokes 1700 series mechanical booster pump combination include a pressure switch, motor starters, overloads, remote booster selection switch and lights for pump running and fault indication.

Dimensions



Performance Curves



Technical Data

Booster displacement	2720 m ³ h ⁻¹ / 1600 ft ³ min ⁻¹
Booster speed	2200 rpm
Booster orientation	Horizontal
Pump displacement	255 m ³ h ⁻¹ / 150 ft ³ min ⁻¹
Pressure switch required	es
Normal cut-in pressure	13 mbar / 10 Torr
Continuous operation pressure limit	2.6 mbar / 2 Torr
Booster drive	7.5 kW / 10 hp
Pump drive (TEFC)	6.5 kW / 7.5 hp
Inlet connections	8 inch ASA/ANSI flange
Discharge connections	2 inch ASA/ANSI flange, 2 inch NPT
Water inlet/outlet connection	inch NPT
Recommended cooling flow 30 C/85 F	5.7 lmin ⁻¹ / 1.5 galmin ⁻¹
Booster oil capacity (V lube H)	1.9 litre / 0.51 US gal
Microvac oil capacity (V lube F)	15 litre / 4 US gal
Inlet height	1035 mm / 40.75 inch
Footprint (L x W x H)	1419 x 919 x 1260 mm 55.87 x 36.18 x 49.61 inch
Weight	1270 kg / 2800 lbs

Ordering Information

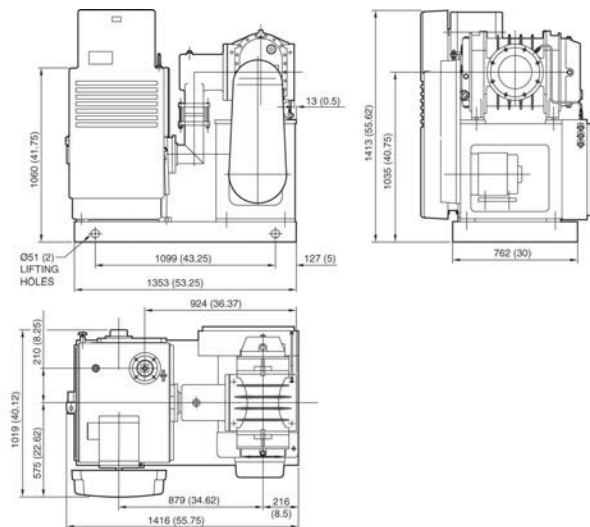
Product Description	Order No.
1721S 230/460V, 3-ph, 60Hz (230/460V Coil)	900170074
Accessories Spares	Order No.
Replacement parts kit	429638016
Bearings	085019757
Valve deck assembly	607417001
Replacement 6" booster Mseal - seal kit	607552001
Replacement 6" booster - maintenance kit	607552002

Stokes 1722 Mechanical Booster Pump Combination

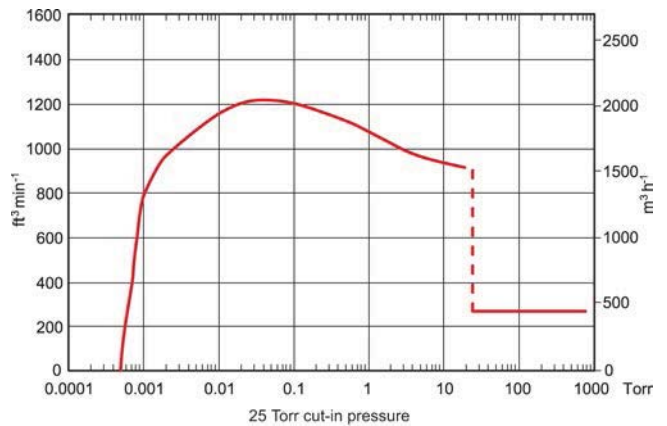
Whether you need to increase the capacity of your existing system or achieve peak performance for a new installation Edwards makes taking advantage of the latest technology easy. These field-proven pumping systems are the workhorse of countless industrial and large chamber applications. Each Stokes 1700 series mechanical booster pump combination includes a Stokes Microvac backing pump and a belt driven, horizontal flow, high vacuum Stokes 6 series mechanical booster pump. In harsh applications where chemical or particulate contamination is present, process isolation boosters are available as an option. Controls for Stokes 1700 series mechanical booster pump combination include a pressure switch, motor starters, overloads, remote booster selection switch and lights for pump running and fault indication.



Dimensions



Performance Curves



Technical Data

Booster displacement	2210 m ³ h ⁻¹ / 1300 ft ³ min ⁻¹
Booster speed	1800 rpm
Booster orientation	Horizontal
Pump displacement	510 m ³ h ⁻¹ / 300 ft ³ min ⁻¹
Pressure switch required	Yes
Normal cut-in pressure	33 mbar / 25 Torr
Continuous operation pressure limit	20 mbar / 15 Torr
Booster drive	5.6 kW / 7.5 hp
Pump drive (TEFC)	7.5 kW / 10 hp
Inlet connections	8 inch ASA/ANSI flange
Discharge connections	3 inch ASA/ANSI flange, 3 inch NPT
Water inlet/outlet connection	½ inch NPT
Recommended cooling flow @ 30°C/85 °F	7.6 lmin ⁻¹ / 2 galmin ⁻¹
Booster oil capacity (V lube H)	1.9 litre / 0.51 US gal
Microvac oil capacity (V lube F)	46 litre / 12 US gal
Inlet height	1035 mm / 40.75 inch
Footprint (L x W x H)	1407 x 1048 x 1438 mm
Weight	55.40 x 41.26 x 56.61 inch 1588 kg / 3500 lbs

Ordering Information

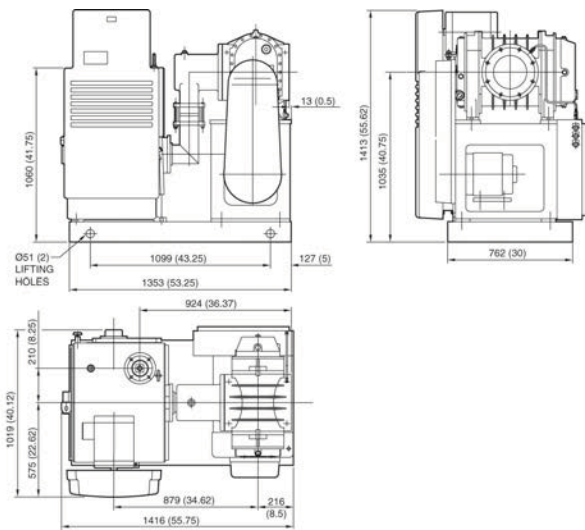
Product description	Order no.
1722 230/460V, 3-ph, 60Hz (230/460V Coil)	900170062
Accessories Spares	Order no.
Replacement parts kit	429638015
Bearings	085019757
Valve deck assembly	607417001
Replacement 6" booster Mseal - seal kit	607552001
Replacement 6" booster - maintenance kit	607552002

Stokes 1722S Mechanical Booster Pump Combination

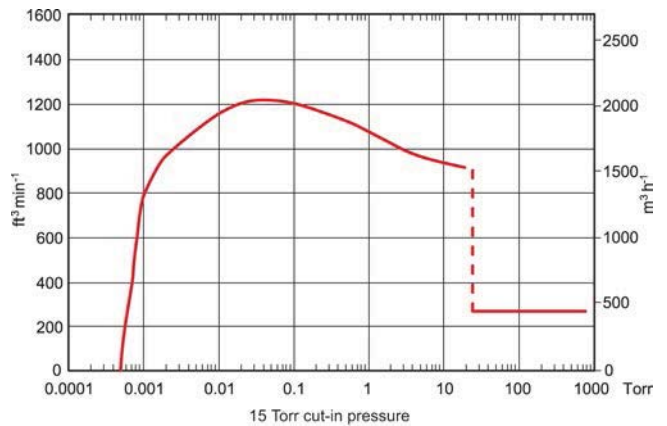


Whether you need to increase the capacity of your existing system or achieve peak performance for a new installation Edwards makes taking advantage of the latest technology easy. These field-proven pumping systems are the workhorse of countless industrial and large chamber applications. Each Stokes 1700 series mechanical booster pump combination includes a Stokes Microvac backing pump and a belt driven, horizontal flow, high vacuum Stokes 6 series mechanical booster pump. In harsh applications where chemical or particulate contamination is present, process isolation boosters are available as an option. Controls for Stokes 1700 series mechanical booster pump combination include a pressure switch, motor starters, overloads, remote booster selection switch and lights for pump running and fault indication.

Dimensions



Performance Curves



Technical Data

Booster displacement	2720m ³ h ⁻¹ / 1600 ft ³ min ⁻¹
Booster speed	2200 rpm
Booster orientation	Horizontal
Pump displacement	510 m ³ h ⁻¹ / 300 ft ³ min ⁻¹
Pressure switch required	Yes
Normal cut-in pressure	20 mbar / 15 Torr
Continuous operation pressure limit	10.7 mbar / 8 Torr
Booster drive	7.5 kW / 10 hp
Pump drive (TEFC)	7.5 kW / 10 hp
Inlet connections	8 inch ASA/ANSI flange
Discharge connections	3 inch ASA/ANSI flange, 3 inch NPT
Water inlet/outlet connection	½ inch NPT
Recommended cooling flow @ 30°C/85°F	7.6 lmin ⁻¹ / 2 galmin ⁻¹
Booster oil capacity (V lube H)	1.9 liter / 0.51 US gal
Microvac oil capacity (V lube F)	46 liter / 12 US gal
Inlet height	1035 mm / 40.75 inch
Footprint (L x W x H)	1407 x 1048 x 1438 mm
	55.40 x 41.26 x 56.61 inch
Weight	1633 kg / 3600 lbs

Ordering Information

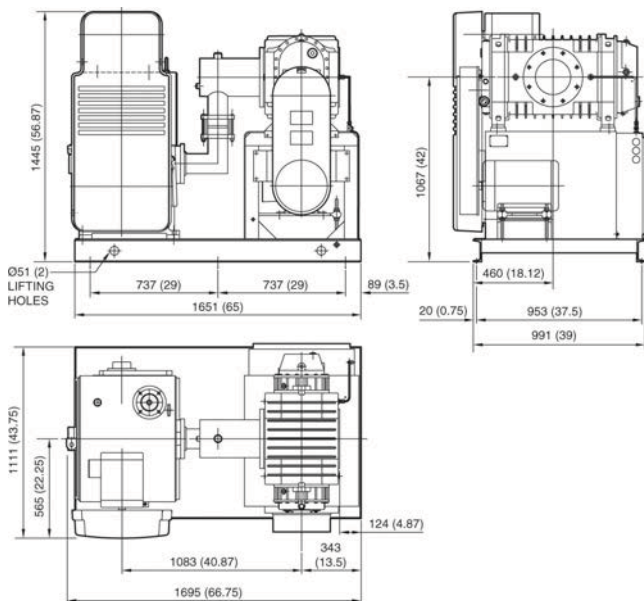
Product description	Order no.
1722S 230/460V, 3-ph, 60Hz (230/460V Coil)	900170075
Accessories Spares	Order no.
Replacement parts kit	429638015
Bearings	085019757
Valve deck assembly	607417001
Replacement 6" booster Mseal - seal kit	607552001
Replacement 6" booster - maintenance kit	607552002

Stokes 1733 Mechanical Booster Pump Combination

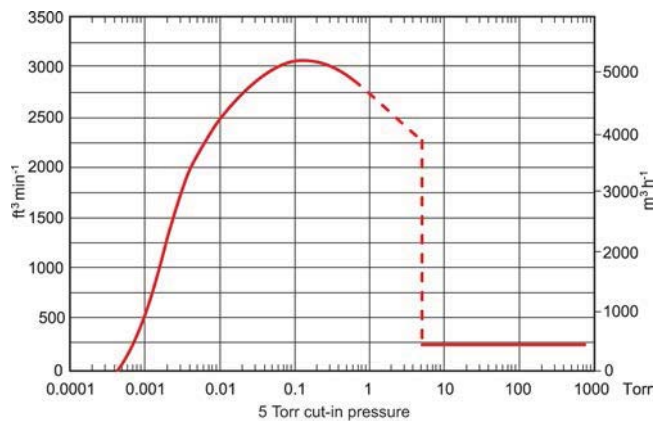
Whether you need to increase the capacity of your existing system or achieve peak performance for a new installation Edwards makes taking advantage of the latest technology easy. These field-proven pumping systems are the workhorse of countless industrial and large chamber applications. Each Stokes 1700 series mechanical booster pump combination includes a Stokes Microvac backing pump and a belt driven, horizontal flow, high vacuum Stokes 6 series mechanical booster pump. In harsh applications where chemical or particulate contamination is present, process isolation boosters are available as an option. Controls for Stokes 1700 series mechanical booster pump combination include a pressure switch, motor starters, overloads, remote booster selection switch and lights for pump running and fault indication.



Dimensions



Performance Curves



Technical Data

Booster displacement	6538 m ³ h ⁻¹ / 3840 ft ³ min ⁻¹
Booster speed	3600 rpm
Booster orientation	Horizontal
Pump displacement	510 m ³ h ⁻¹ / 300 ft ³ min ⁻¹
Pressure switch required	Yes
Normal cut-in pressure	6.7 mbar / 5 Torr
Continuous operation pressure limit	0.8 mbar / 0.6 Torr
Booster drive	18.5 kW / 25 hp
Pump drive	7.5 kW / 10 hp
Inlet connections	8 inch ASA/ANSI flange
Discharge connections	3 inch ASA/ANSI flange, 3 inch NPT
Water inlet connection	½ inch NPT (2)
Water outlet connection	½ inch NPT
Recommended cooling flow @ 30°C/85 °F	7.6 l min ⁻¹ / 2 gal min ⁻¹
Booster oil capacity (V lube H)	1.9 litre / 0.51 US gal
Microvac oil capacity (V lube F)	46 litre / 12 US gal
Weight	1710 kg / 3770 lbs

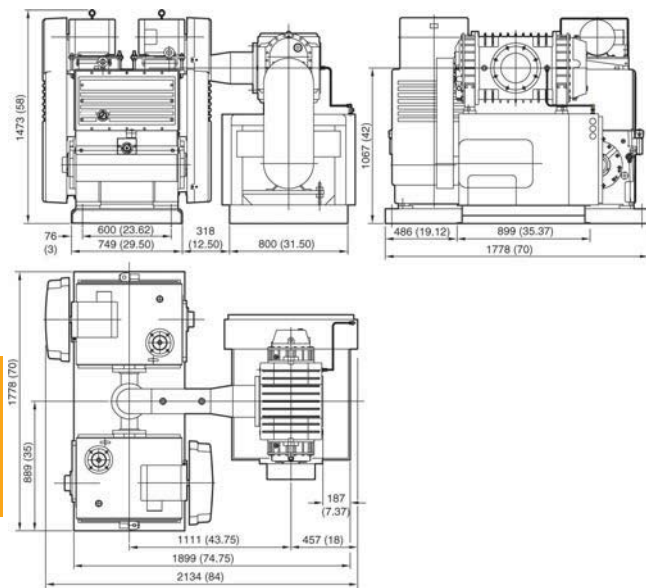
Ordering Information

Product description	Order no.
1733 230/460V, 3-ph, 60Hz (230/460V Coil)	900170S33
Accessories Spares	Order no.
Replacement parts kit	429638015
Bearings	085019757
Valve deck assembly	607417001
Replacement 6" booster Mseal - seal kit	607552001
Replacement 6" booster - maintenance kit	607552002

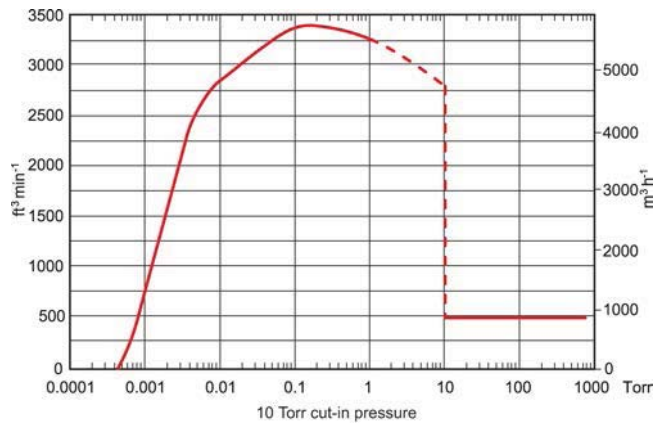


Whether you need to increase the capacity of your existing system or achieve peak performance for a new installation, Edwards makes taking advantage of the latest technology easy. These field-proven pumping systems are the workhorse of countless industrial and large chamber applications. Each Stokes 1700 series mechanical booster pump combination includes a Stokes Microvac backing pump and a belt driven, horizontal flow, high vacuum Stokes 6 series mechanical booster pump. In harsh applications where chemical or particulate contamination is present, process isolation boosters are available as an option. Controls for Stokes 1700 series mechanical booster pump combination include a pressure switch, motor starters, overloads, remote booster selection switch and lights for pump running and fault indication.

Dimensions



Performance Curves



Technical Data

Booster displacement	6538 m ³ h ⁻¹ / 3840 ft ³ min ⁻¹
Booster speed	3600 rpm
Booster orientation	Horizontal
Pump displacement	1020 m ³ h ⁻¹ / 600 ft ³ min ⁻¹
Pressure switch required	Yes
Normal cut-in pressure	13.3 mbar / 10 Torr
Continuous operation pressure limit	1.3 mbar / 1 Torr
Booster drive	22.5 kW / 30 hp
Pump drive	7.5 kW (x2) / 10 hp (x2)
Inlet connections	8 inch ASA/ANSI flange
Discharge connections	3 inch ASA/ANSI flange, 3 inch NPT (x2)
Water inlet/outlet connection	½ inch NPT (x2)
Recommended cooling flow @ 30°C/85°F	7.6 l min ⁻¹ (x2) / 2 gal min ⁻¹ (x2)
Booster oil capacity (V lube H)	1.9 litre / 0.51 US gal
Microvac oil capacity (V lube F)	92 litre / 24 US gal
Weight	2767 kg / 6100 lbs

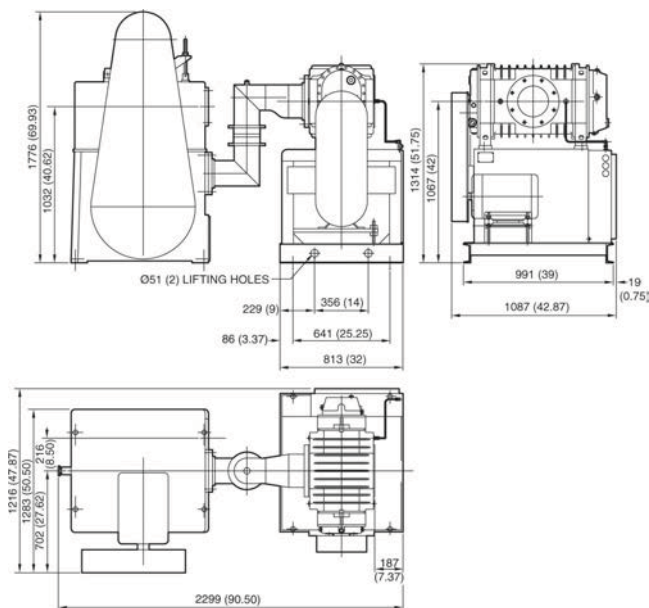
Ordering Information

Product description	Order no.
1733HC 230/460V, 3-ph, 60Hz (230/460V Coil)	900170S34
Accessories Spares	Order no.
Replacement parts kit	429638015
Bearings	085019757
Valve deck assembly	607417001
Replacement 6" booster Mseal - seal kit	607552001
Replacement 6" booster - maintenance kit	607552002

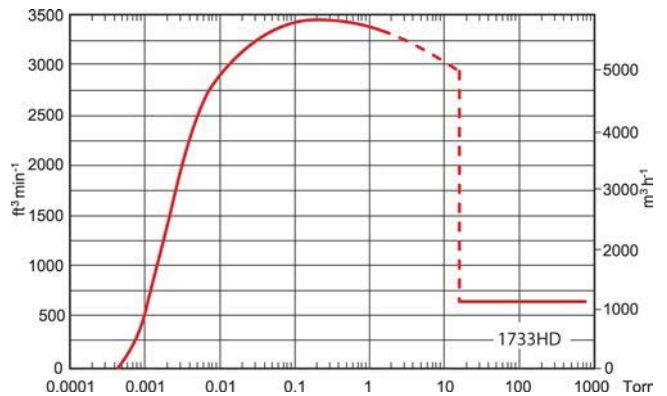
Whether you need to increase the capacity of your existing system or achieve peak performance for a new installation Edwards makes taking advantage of the latest technology easy. These field-proven pumping systems are the workhorse of countless industrial and large chamber applications. Each Stokes1700 series mechanical booster pump combination includes a Stokes Microvac backing pump and a belt driven, horizontal flow, high vacuum Stokes 6 series mechanical booster pump. In harsh applications where chemical or particulate contamination is present, process isolation boosters are available as an option. Controls for Stokes 1700 series mechanical booster pump combination include a pressure switch, motor starters, overloads, remote booster selection switch and lights for pump running and fault indication.



Dimensions



Performance Curves



Technical Data

Booster displacement	6538 m ³ h ⁻¹ / 3840 ft ³ min ⁻¹
Booster speed	3600 rpm
Booster orientation	Horizontal
Pump displacement	1240 m ³ h ⁻¹ / 730 ft ³ min ⁻¹
Pressure switch required	Yes
Normal cut-in pressure	20 mbar / 15 Torr
Continuous operation pressure limit	2 mbar / 1.5 Torr
Booster drive	22.5 kW / 30 hp
Pump drive	22.5 kW / 30 hp
Inlet connections	8 inch ASA/ANSI flange
Discharge connections	3 inch NPT
Water inlet/outlet connection	1 inch NPT
Recommended cooling flow	18.9 lmin ⁻¹ / 5 galmin ⁻¹
Booster oil capacity (V lube H)	1.9 litre / 0.51 US gal
Microvac oil capacity (V lube F)	76 litre / 20 US gal
Weight	3538 kg / 7800 lbs

Ordering Information

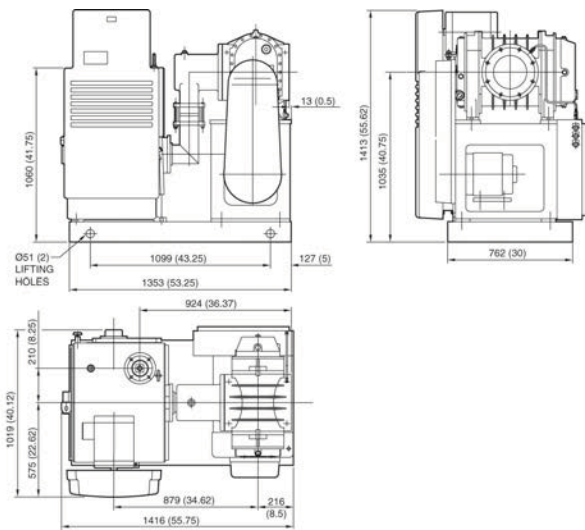
Product Description	Order No.
1733HD 230/460V, 3-ph, 60Hz (230/460V Coil)	900170S35
Accessories Spares	Order No.
Replacement 6" booster Mseal - seal kit	607552001
Replacement 6" booster - maintenance kit	607552002
Replacement oil seal	085018191
Replacement roller bearing	085033795
Roller bearing with adaptive sleeve	085033794
Valve deck stainless steel clappers	272963002
Valve deck springs	274172001

Stokes 1738 Mechanical Booster Pump Combination

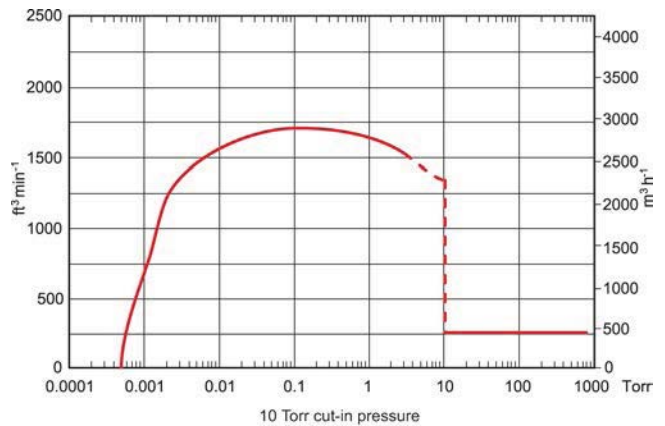


Whether you need to increase the capacity of your existing system or achieve peak performance for a new installation Edwards makes taking advantage of the latest technology easy. These field-proven pumping systems are the workhorse of countless industrial and large chamber applications. Each Stokes 1700 series mechanical booster pump combination includes a Stokes Microvac backing pump and a belt driven, horizontal flow, high vacuum Stokes 6 series mechanical booster pump. In harsh applications where chemical or particulate contamination is present, process isolation boosters are available as an option. Controls for Stokes 1700 series mechanical booster pump combination include a pressure switch, motor starters, overloads, remote booster selection switch and lights for pump running and fault indication.

Dimensions



Performance Curves



Technical Data

Booster displacement	3398 m ³ h ⁻¹ / 2000 ft ³ min ⁻¹
Booster speed	2750 rpm
Booster orientation	Horizontal
Pump displacement	510 m ³ h ⁻¹ / 300 ft ³ min ⁻¹
Pressure switch required	Yes
Normal cut-in pressure	13 mbar / 10 Torr
Continuous operation pressure limit	4 mbar / 3 Torr
Booster drive	7.5 kW / 10 hp
Pump drive (TEFC)	7.5 kW / 10 hp
Inlet connections	8 inch ASA/ANSI flange
Discharge connections	3 inch ASA/ANSI flange, 3 inch NPT
Water inlet/outlet connection	½ inch NPT
Recommended cooling flow @ 30°C/85 °F	7.6 lmin ⁻¹ / 2 galmin ⁻¹
Booster oil capacity (V lube H)	1.9 litre / 0.51 US gal
Microvac oil capacity (V lube F)	46 litre / 12 US gal
Inlet height	1035 mm / 40.75 inch
Footprint (L x W x H)	1407 x 1048 x 1438 mm
	55.40 x 41.26 x 56.61 inch
Weight	1633 kg / 3600 lbs

Ordering Information

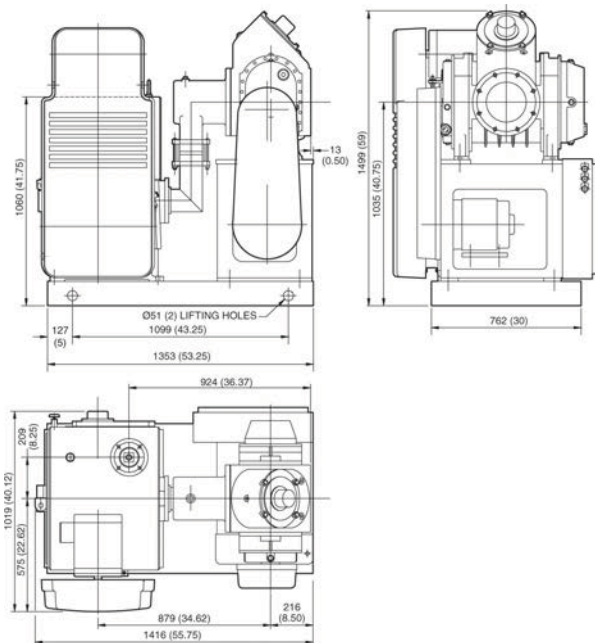
Product description	Order no.
1738 230/460V, 3-ph, 60Hz (230/460V Coil)	900170038
Accessories Spares	Order no.
Replacement parts kit	429638015
Bearings	085019757
Valve deck assembly	607417001
Replacement 6" booster Mseal - seal kit	607552001
Replacement 6" booster - maintenance kit	607552002

Stokes 1738 P Mechanical Booster Pump Combination

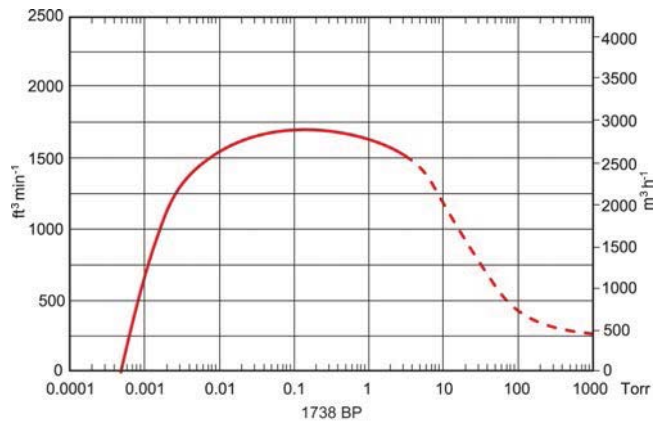
Whether you need to increase the capacity of your existing system or achieve peak performance for a new installation Edwards makes taking advantage of the latest technology easy. These field-proven pumping systems are the workhorse of countless industrial and large chamber applications. Each Stokes 1700 series mechanical booster pump combination includes a Stokes Microvac backing pump and a belt driven, horizontal flow, high vacuum Stokes 6 series mechanical booster pump. In harsh applications where chemical or particulate contamination is present, process isolation boosters are available as an option. Controls for Stokes 1700 series mechanical booster pump combination include a pressure switch, motor starters, overloads, remote booster selection switch and lights for pump running and fault indication.



Dimensions



Performance Curves



Technical Data

Booster displacement	3398 m ³ h ⁻¹ / 2000 ft ³ min ⁻¹
Booster speed	2750 rpm
Booster orientation	Horizontal
Pump displacement	510 m ³ h ⁻¹ / 300 ft ³ min ⁻¹
Pressure switch required	No
Continuous operation pressure limit	4 mbar / 3 Torr
Booster drive	11 kW / 15 hp
Pump drive (TEFC)	7.5 kW / 10 hp
Inlet connections	8 inch ASA/ANSI flange
Discharge connections	3 inch ASA/ANSI flange, 3 inch NPT
Water inlet/outlet connection	½ inch NPT
Recommended cooling flow @ 30°C/85 °F	7.6 lmin ⁻¹ / 2 galmin ⁻¹
Booster oil capacity (V lube H)	1.9 litre / 0.51 US gal
Microvac oil capacity (V lube F)	46 litre / 12 US gal
Weight	1690 kg / 3725 lbs

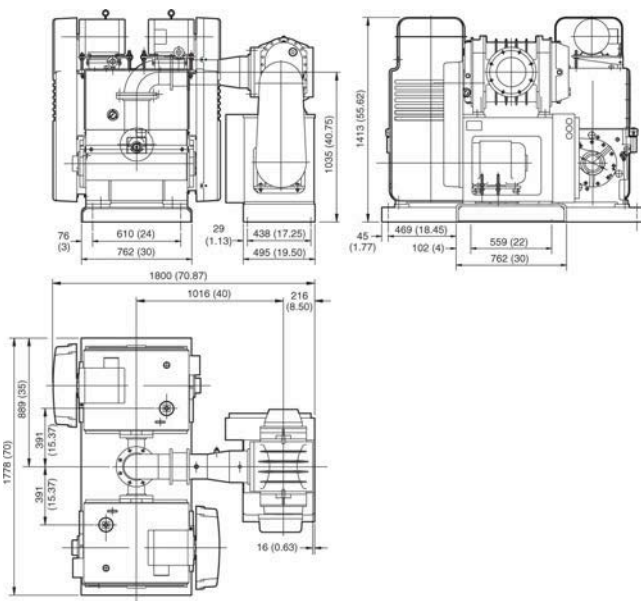
Ordering Information

Product description	Order no.
1738BP 230/460V, 3-ph, 60Hz (230/460V Coil)	90017038B
Accessories Spares	Order no.
Replacement parts kit	429638015
Bearings	085019757
Valve deck assembly	607417001
Replacement 6" booster Mseal - seal kit	607552001
Replacement 6" booster - maintenance kit	607552002

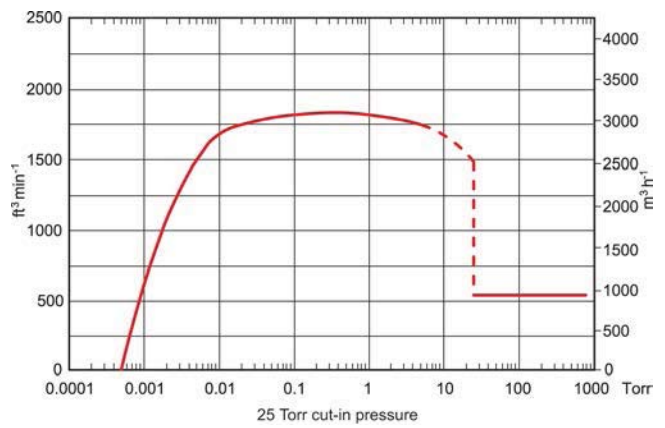


Whether you need to increase the capacity of your existing system or achieve peak performance for a new installation Edwards makes taking advantage of the latest technology easy. These field-proven pumping systems are the workhorse of countless industrial and large chamber applications. Each Stokes 1700 series mechanical booster pump combination includes a Stokes Microvac backing pump and a belt driven, horizontal flow, high vacuum Stokes 6 series mechanical booster pump. In harsh applications where chemical or particulate contamination is present, process isolation boosters are available as an option. Controls for Stokes 1700 series mechanical booster pump combination include a pressure switch, motor starters, overloads, remote booster selection switch and lights for pump running and fault indication.

Dimensions



Performance Curves



Technical Data

Booster displacement	3398 m ³ h ⁻¹ / 2000 ft ³ min ⁻¹
Booster speed	2750 rpm
Booster orientation	Horizontal
Pump displacement	1020 m ³ h ⁻¹ / 600 ft ³ min ⁻¹
Pressure switch required	Yes
Normal cut-in pressure	33 mbar / 25 Torr
Continuous operation pressure limit	6.7 mbar / 5 Torr
Booster drive	7.5 kW / 10 hp
Pump drive (TEFC)	7.5 kW (x2) / 10 hp (x2)
Inlet connections	8 inch ASA/ANSI flange
Discharge connections	3 inch ASA/ANSI flange, 3 inch NPT (x2)
Water inlet/outlet connection	½ inch NPT (x2)
Recommended cooling flow @ 30°C/85°F	7.6 lmin ⁻¹ (x2) / 2 galmin ⁻¹ (x2)
Booster oil capacity (V lube H)	1.9 litre / 0.51 US gal
Microvac oil capacity (V lube F)	92 litre / 24 US gal
Weight	2404 kg / 5300 lbs

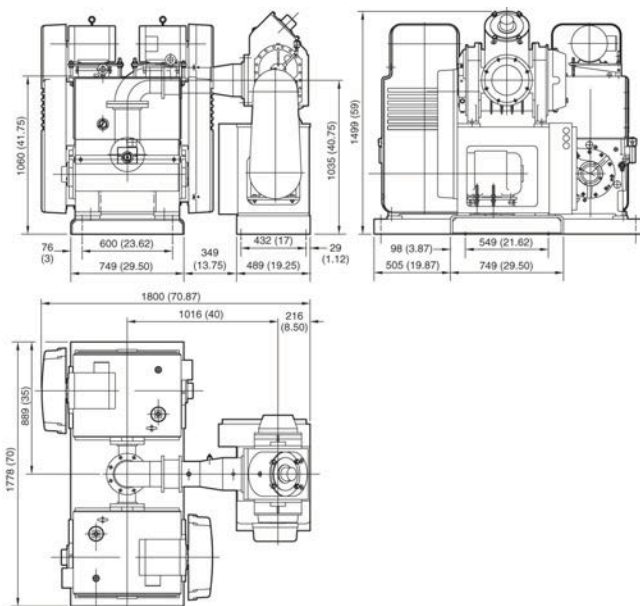
Ordering Information

Product description	Order no.
1738HC 230/460V, 3-ph, 60Hz (230/460V Coil)	90017C038
Accessories Spares	Order no.
Replacement parts kit	429638015
Bearings	085019757
Valve deck assembly	607417001
Replacement 6" booster Mseal - seal kit	607552001
Replacement 6" booster - maintenance kit	607552002

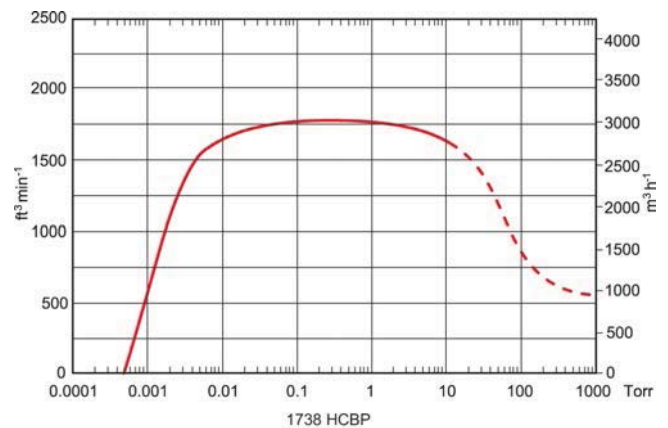
Whether you need to increase the capacity of your existing system or achieve peak performance for a new installation Edwards makes taking advantage of the latest technology easy. These field-proven pumping systems are the workhorse of countless industrial and large chamber applications. Each Stokes 1700 series mechanical booster pump combination includes a Stokes Microvac backing pump and a belt driven, horizontal flow, high vacuum Stokes 6 series mechanical booster pump. In harsh applications where chemical or particulate contamination is present, process isolation boosters are available as an option. Controls for Stokes 1700 series mechanical booster pump combination include a pressure switch, motor starters, overloads, remote booster selection switch and lights for pump running and fault indication.



Dimensions



Performance Curves



Technical Data

Booster displacement	3398 $\text{m}^3 \text{h}^{-1}$ / 2000 $\text{ft}^3 \text{min}^{-1}$
Booster speed	2750 rpm
Booster orientation	Horizontal
Pump displacement	1020 $\text{m}^3 \text{h}^{-1}$ / 600 $\text{ft}^3 \text{min}^{-1}$
Pressure switch required	No
Continuous operation pressure limit	6.7 mbar / 5 Torr
Booster drive	11.2 kW / 15 hp
Pump drive (TEFC)	7.5 kW (x2) / 10 hp (x2)
Inlet connections	8 inch ASA/ANSI flange
Discharge connections	3 inch ASA/ANSI flange, 3 inch NPT (x2)
Water inlet/outlet connection	½ inch NPT (x2)
Recommended cooling flow @ 30°C/85°F	7.6 lmin^{-1} (x2) / 2 galmin^{-1} (x2)
Booster oil capacity (V lube H)	1.9 litre / 0.51 US gal
Microvac oil capacity (V lube F)	92 litre / 24 US gal
Weight	2449 kg / 5400 lbs

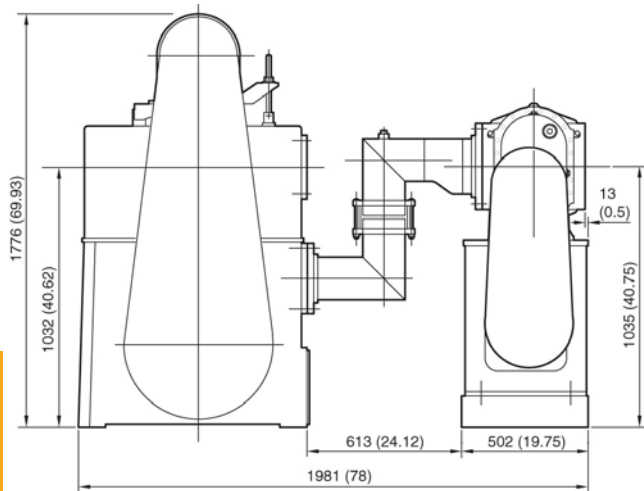
Ordering Information

Product description	Order no.
1738HCBP 230/460V, 3-ph, 60Hz (230/460V Coil)	90017C38B
Accessories Spares	Order no.
Replacement parts kit	429638015
Bearings	085019757
Valve deck assembly	607417001
Replacement 6" booster Mseal - seal kit	607552001
Replacement 6" booster - maintenance kit	607552002

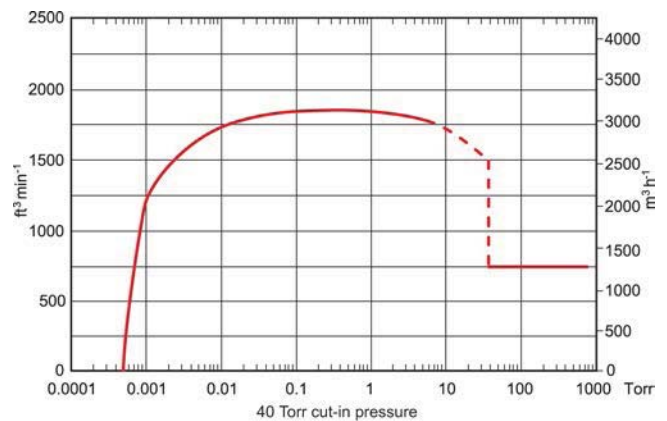


Whether you need to increase the capacity of your existing system or achieve peak performance for a new installation Edwards makes taking advantage of the latest technology easy. These field-proven pumping systems are the workhorse of countless industrial and large chamber applications. Each Stokes 1700 series mechanical booster pump combination includes a Stokes Microvac backing pump and a belt driven, horizontal flow, high vacuum Stokes 6 series mechanical booster pump. In harsh applications where chemical or particulate contamination is present, process isolation boosters are available as an option. Controls for Stokes 1700 series mechanical booster pump combination include a pressure switch, motor starters, overloads, remote booster selection switch and lights for pump running and fault indication.

Dimensions



Performance Curves



Technical Data

Booster displacement	3398 m ³ h ⁻¹ / 2000 ft ³ min ⁻¹
Booster speed	2750 rpm
Booster orientation	Horizontal
Pump displacement	1240 m ³ h ⁻¹ / 730 ft ³ min ⁻¹
Pressure switch required	Yes
Normal cut-in pressure	53 mbar / 40 Torr
Continuous operation pressure limit	16 mbar / 12 Torr
Booster drive	11 kW / 15 hp
Pump drive (TEFC)	22.5 kW / 30 hp
Inlet connections	8 inch ASA/ANSI flange
Discharge connections	5 inch NPT
Water inlet/outlet connection	1 inch NPT
Recommended cooling flow 30 C/85 F	18.9 lmin ⁻¹ / 5 galmin ⁻¹
Booster oil capacity (V lube H)	1.9 litre / 0.51 US gal
Microvac oil capacity (V lube F)	76 litre / 20 US gal
Weight	3187 kg / 7025 lbs

Ordering Information

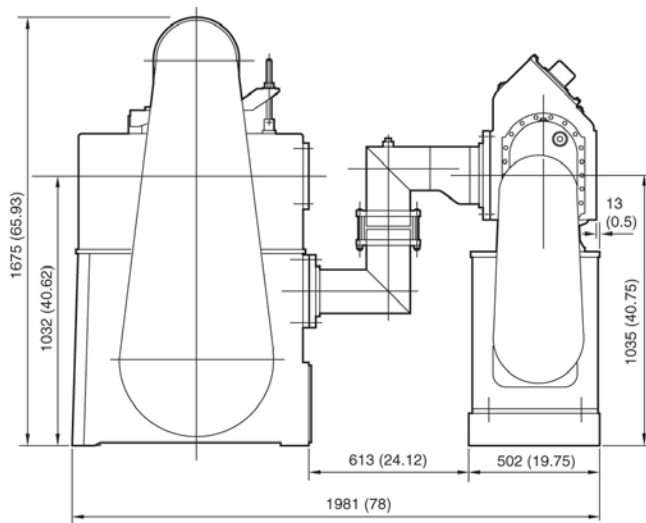
Product Description	Order No.
1738HD 230/460V, 3-ph, 60Hz (230/460V Coil)	90017D038
Accessories Spares	Order No.
Replacement roller bearing	085033795
Replacement oil seal	085018191
Roller bearing with adaptive sleeve	085033794
Valve deck stainless steel clappers	272963002
Replacement 6" booster Mseal - seal kit	607552001
Replacement 6" booster - maintenance kit	607552002
Valve deck springs	274172001

Stokes 1738 Mechanical Booster Pump Combination

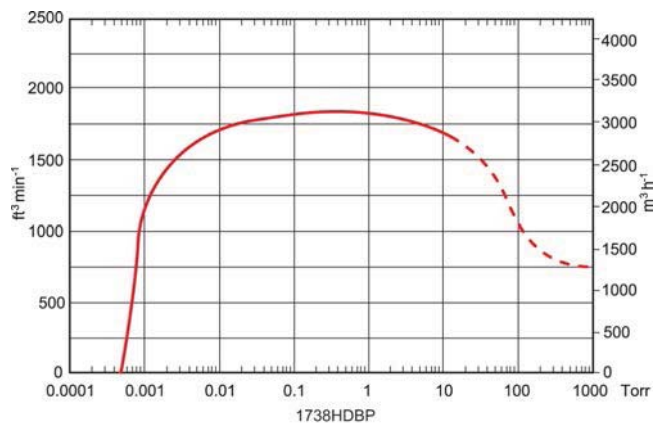
Whether you need to increase the capacity of your existing system or achieve peak performance for a new installation Edwards makes taking advantage of the latest technology easy. These field-proven pumping systems are the workhorse of countless industrial and large chamber applications. Each Stokes 1700 series mechanical booster pump combination includes a Stokes Microvac backing pump and a belt driven, horizontal flow, high vacuum Stokes 6 series mechanical booster pump. In harsh applications where chemical or particulate contamination is present, process isolation boosters are available as an option. Controls for Stokes 1700 series mechanical booster pump combination include a pressure switch, motor starters, overloads, remote booster selection switch and lights for pump running and fault indication.



Dimensions



Performance Curves



Technical Data

Booster displacement	3398 m ³ h ⁻¹ / 2000 ft ³ min ⁻¹
Booster speed	2750 rpm
Booster orientation	Horizontal
Pump displacement	1240 m ³ h ⁻¹ / 730 ft ³ min ⁻¹
Pressure switch required	No
Continuous operation pressure limit	16 mbar / 12 Torr
Booster drive	11 kW / 15 hp
Pump drive (TEFC)	22 kW / 30 hp
Inlet connections	8 inch ASA/ANSI flange
Discharge connections	5 inch NPT
Water inlet/outlet connection	1 inch NPT
Recommended cooling flow @ 30°C/85 °F	18.9 lmin ⁻¹ / 5 galmin ⁻¹
Booster oil capacity (V lube H)	1.9 litre / 0.51 US gal
Microvac oil capacity (V lube F)	76 litre / 20 US gal
Weight	3221 kg / 7100 lbs

Ordering Information

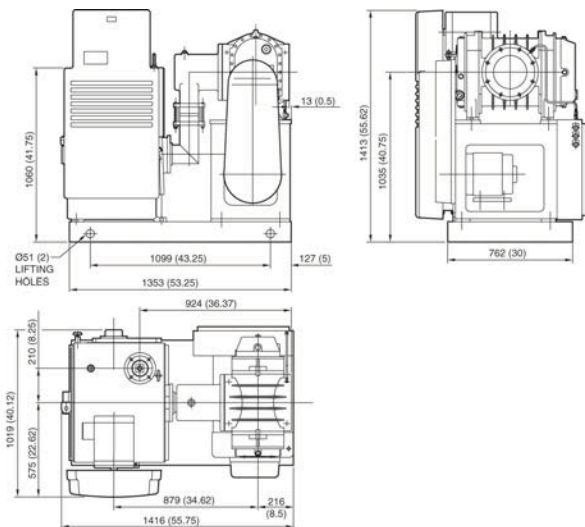
Product description	Order no.
1738HDBP 230/460V, 3-ph, 60Hz (230/460V Coil)	90017D38B
Accessories Spares	Order no.
Replacement 6" booster Mseal - seal kit	607552001
Replacement 6" booster - maintenance kit	607552002
Replacement oil seal	085018191
Replacement roller bearing	085033795
Roller bearing with adaptive sleeve	085033794
Valve deck stainless steel clappers	272963002
Valve deck springs	274172001

Stokes 1739 Mechanical Booster Pump Combination

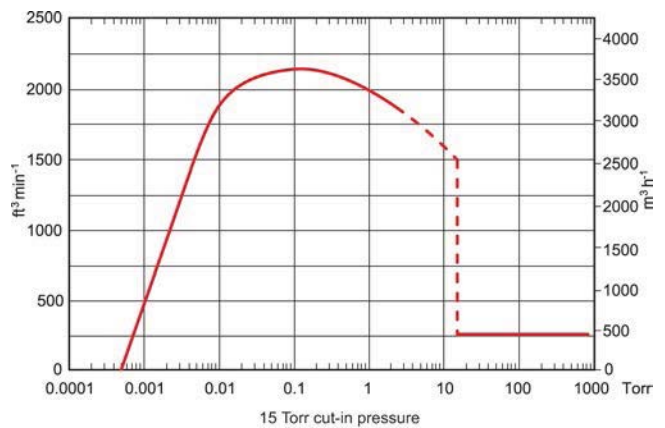


Whether you need to increase the capacity of your existing system or achieve peak performance for a new installation Edwards makes taking advantage of the latest technology easy. These field-proven pumping systems are the workhorse of countless industrial and large chamber applications. Each Stokes 1700 series mechanical booster pump combination includes a Stokes Microvac backing pump and a belt driven, horizontal flow, high vacuum Stokes 6 series mechanical booster pump. In harsh applications where chemical or particulate contamination is present, process isolation boosters are available as an option. Controls for Stokes 1700 series mechanical booster pump combination include a pressure switch, motor starters, overloads, remote booster selection switch and lights for pump running and fault indication.

Dimensions



Performance Curves



Technical Data

Booster displacement	4420 m ³ h ⁻¹ / 2600 ft ³ min ⁻¹
Booster rpm	3600 rpm
Booster orientation	Horizontal
Pump displacement	510 m ³ h ⁻¹ / 300 ft ³ min ⁻¹
Pressure switch required	Yes
Normal cut-in pressure	13 mbar / 15 Torr
Continuous operation pressure limit	2.7 mbar / 2 Torr
Booster drive	22.4 kW / 30 hp
Pump drive (TEFC)	7.5 kW / 10 hp
Inlet connections	8 inch ASA/ANSI flange
Discharge connections	3 inch ASA/ANSI flange, 3 inch NPT
Water inlet/outlet connection	½ inch NPT
Recommended cooling flow @ 30°C/85 °F	7.6 lmin ⁻¹ / 2 galmin ⁻¹
Booster oil capacity (V lube H)	1.9 litre / 0.51 US gal
Microvac oil capacity (V lube F)	46 litre / 12 US gal
Inlet height	1067 mm / 42 inch
Footprint (L x W x H)	1905 x 1270 x 1318 mm
	75 x 50 x 51.89 inch
Weight	1803 kg / 3975 lbs

Ordering Information

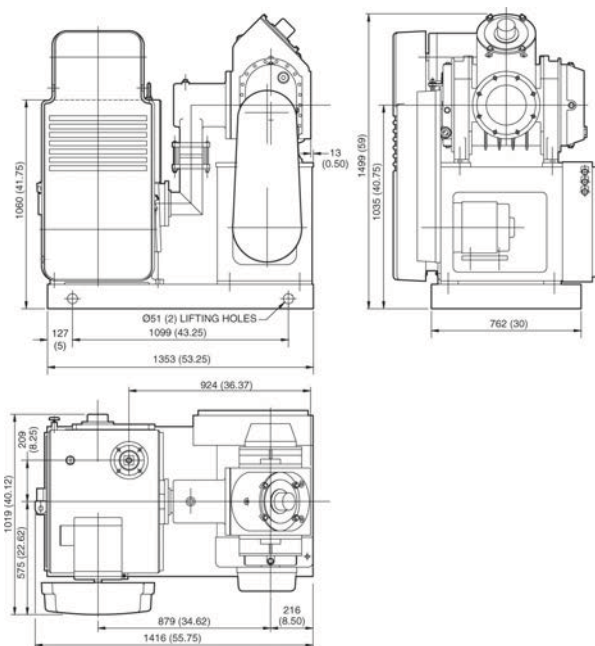
Product description	Order no.
1739 230/460V, 3-ph, 60Hz (230/460V Coil)	900170039
Accessories Spares	Order no.
Replacement parts kit	429638015
Bearings	085019757
Valve deck assembly	607417001
Replacement 6" booster Mseal - seal kit	607552001
Replacement 6" booster - maintenance kit	607552002

Stokes 1739 P Mechanical Booster Pump Combination

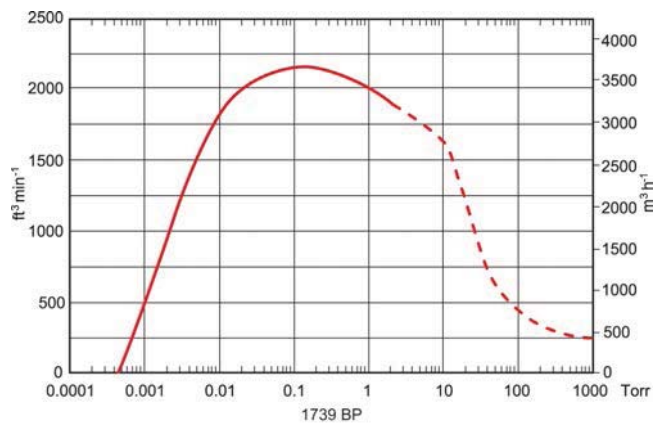
Whether you need to increase the capacity of your existing system or achieve peak performance for a new installation Edwards makes taking advantage of the latest technology easy. These field-proven pumping systems are the workhorse of countless industrial and large chamber applications. Each Stokes 1700 series mechanical booster pump combination includes a Stokes Microvac backing pump and a belt driven, horizontal flow, high vacuum Stokes 6 series mechanical booster pump. In harsh applications where chemical or particulate contamination is present, process isolation boosters are available as an option. Controls for Stokes 1700 series mechanical booster pump combination include a pressure switch, motor starters, overloads, remote booster selection switch and lights for pump running and fault indication.



Dimensions



Performance Curves



Technical Data

Booster displacement	4420 m ³ h ⁻¹ / 2600 ft ³ min ⁻¹
Booster speed	3600 rpm
Booster orientation	Horizontal
Pump displacement	510 m ³ h ⁻¹ / 300 ft ³ min ⁻¹
Pressure switch required	No
Continuous operation pressure limit	2.7 mbar / 2 Torr
Booster drive	22 kW / 30 hp
Pump drive (TEFC)	7.5 kW / 10 hp
Inlet connections	8 inch ASA/ANSI flange
Discharge connections	3 inch ASA/ANSI flange, 3 inch NPT
Water inlet/outlet connection	½ inch NPT
Recommended cooling flow @ 30°C/85 °F	7.6 lmin ⁻¹ / 2 galmin ⁻¹
Booster oil capacity (V lube H)	1.9 litre / 0.51 US gal
Microvac oil capacity (V lube F)	46 litre / 12 US gal
Weight	1837 kg / 4050 lbs

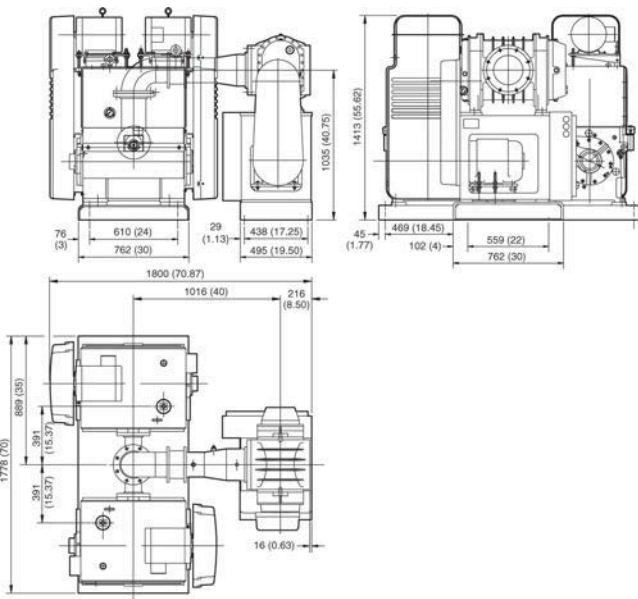
Ordering Information

Product description	Order no.
1739BP High Capacity Mechanical Booster Pump Combination	90017039B
230/460V, 3Ø, 60 Hz with 230/460V Coil	
Accessories Spares	Order no.
Replacement parts kit	429638015
Bearings	085019757
Valve deck assembly	607417001
Replacement 6" booster Mseal - seal kit	607552001
Replacement 6" booster - maintenance kit	607552002

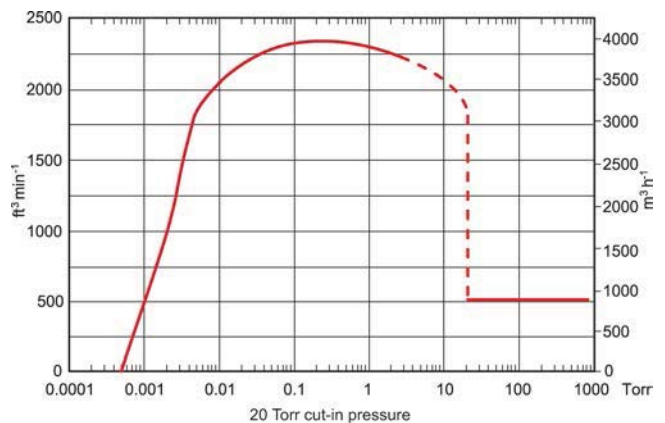


Whether you need to increase the capacity of your existing system or achieve peak performance for a new installation Edwards makes taking advantage of the latest technology easy. These field-proven pumping systems are the workhorse of countless industrial and large chamber applications. Each Stokes 1700 series mechanical booster pump combination includes a Stokes Microvac backing pump and a belt driven, horizontal flow, high vacuum Stokes 6 series mechanical booster pump. In harsh applications where chemical or particulate contamination is present, process isolation boosters are available as an option. Controls for Stokes 1700 series mechanical booster pump combination include a pressure switch, motor starters, overloads, remote booster selection switch and lights for pump running and fault indication.

Dimensions



Performance Curves



Technical Data

Booster displacement	4420 m ³ h ⁻¹ / 2600 ft ³ min ⁻¹
Booster speed	3600 rpm
Booster orientation	Horizontal
Pump displacement	1020 m ³ h ⁻¹ / 600 ft ³ min ⁻¹
Pressure switch required	Yes
Normal cut-in pressure	33 mbar / 20 Torr
Continuous operation pressure limit	3.4 mbar / 2.5 Torr
Booster drive	18.6 kW / 25 hp
Pump drive (TEFC)	7.5 kW (x2) / 10 hp (x2)
Inlet connections	8 inch ASA/ANSI flange
Discharge connections	3 inch ASA/ANSI flange, 3 inch NPT (x2)
Water inlet/outlet connection	½ inch NPT (x2)
Recommended cooling flow @ 30°C/85°F	7.6 l min ⁻¹ (x2) / 2 gal min ⁻¹ (x2)
Booster oil capacity (V lube H)	1.9 litre / 0.51 US gal
Microvac oil capacity (V lube F)	92 litre / 24 US gal
Weight	2733 kg / 6025 lbs

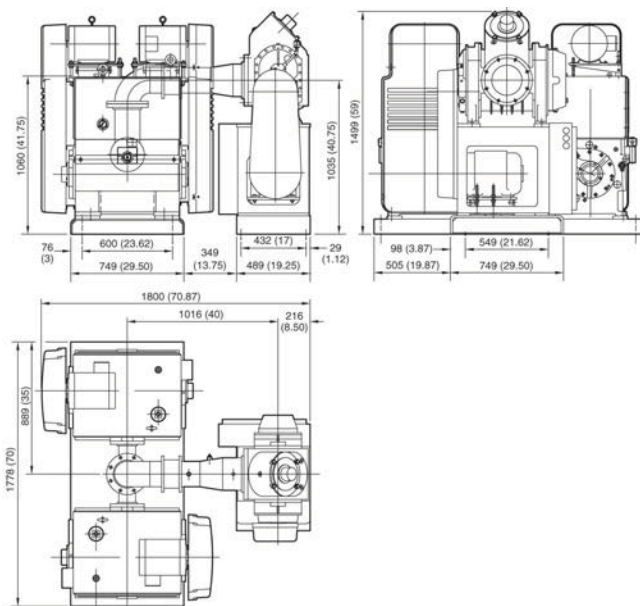
Ordering Information

Product description	Order no.
1739HC 230/460V, 3-ph, 60Hz (230/460V Coil)	90017C039
Accessories Spares	Order no.
Replacement parts kit	429638015
Bearings	085019757
Valve deck assembly	607417001
Replacement 6" booster Mseal - seal kit	607552001
Replacement 6" booster - maintenance kit	607552002

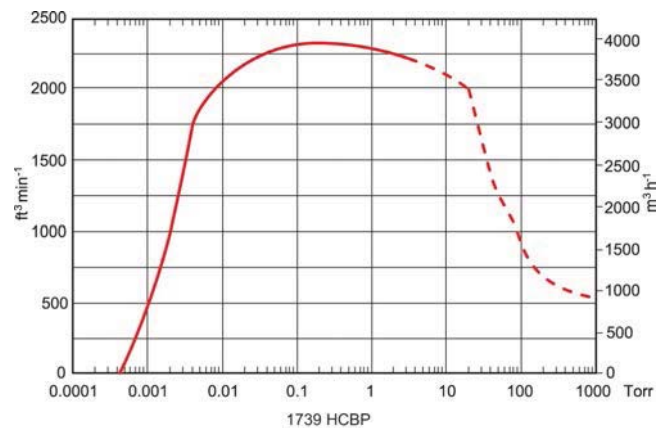
Whether you need to increase the capacity of your existing system or achieve peak performance for a new installation, Edwards makes taking advantage of the latest technology easy. These field-proven pumping systems are the workhorse of countless industrial and large chamber applications. Each Stokes 1700 series mechanical booster pump combination includes a Stokes Microvac backing pump and a belt driven, horizontal flow, high vacuum Stokes 6 series mechanical booster pump. In harsh applications where chemical or particulate contamination is present, process isolation boosters are available as an option. Controls for Stokes 1700 series mechanical booster pump combination include a pressure switch, motor starters, overloads, remote booster selection switch and lights for pump running and fault indication.



Dimensions



Performance Curves



Technical Data

Booster displacement	4420 m ³ h ⁻¹ / 2600 ft ³ min ⁻¹
Booster speed	3600 rpm
Booster orientation	Horizontal
Pump displacement	1020 m ³ h ⁻¹ / 600 ft ³ min ⁻¹
Pressure switch required	No
Continuous operation pressure limit	4 mbar / 3 Torr
Booster drive	18.6 kW / 25 hp
Pump drive (TEFC)	7.5 kW (x2) / 10 hp (x2)
Inlet connections	8 inch ASA/ANSI flange
Discharge connections	3 inch ASA/ANSI flange, 3 inch NPT (x2)
Water inlet/outlet connection	inch NPT (x2)
Recommended cooling flow 30 C/85 F	7.6 lmin ⁻¹ (x2) / 2 galmin ⁻¹ (x2)
Booster oil capacity (V lube H)	1.9 litre / 0.51 US gal
Microvac oil capacity (V lube F)	92 litre / 24 US gal
Weight	2767 kg / 6100 lbs

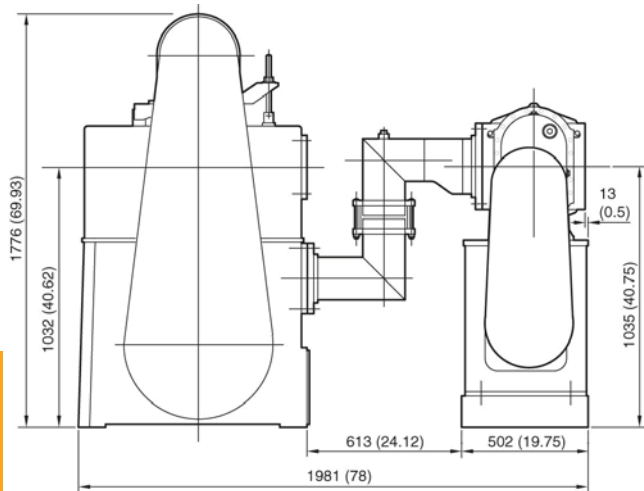
Ordering Information

Product Description	Order No.
1739HCBP 230/460V, 3-ph, 60Hz (230/460V Coil)	90017C39B
Accessories Spares	Order No.
Replacement parts kit	429638015
Bearings	085019757
Valve deck assembly	607417001
Replacement 6" booster Mseal - seal kit	607552001
Replacement 6" booster - maintenance kit	607552002

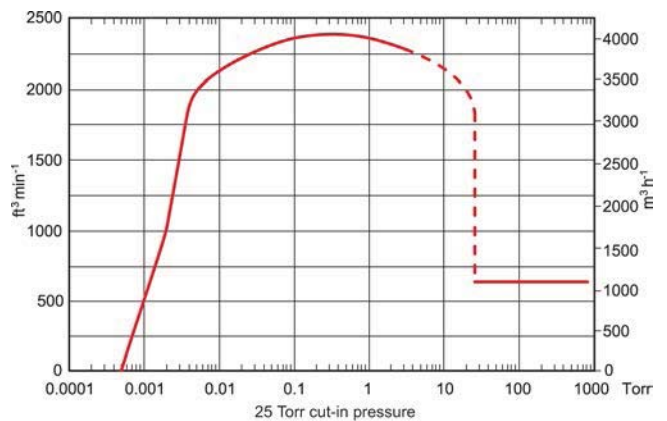


Whether you need to increase the capacity of your existing system or achieve peak performance for a new installation Edwards makes taking advantage of the latest technology easy. These field-proven pumping systems are the workhorse of countless industrial and large chamber applications. Each Stokes 1700 series mechanical booster pump combination includes a Stokes Microvac backing pump and a belt driven, horizontal flow, high vacuum Stokes 6 series mechanical booster pump. In harsh applications where chemical or particulate contamination is present, process isolation boosters are available as an option. Controls for Stokes 1700 series mechanical booster pump combination include a pressure switch, motor starters, overloads, remote booster selection switch and lights for pump running and fault indication.

Dimensions



Performance Curves



Technical Data

Booster displacement	4420 m ³ h ⁻¹ / 2600 ft ³ min ⁻¹
Booster speed	3600 rpm
Booster orientation	Horizontal
Pump displacement	1240 m ³ h ⁻¹ / 730 ft ³ min ⁻¹
Pressure switch required	Yes
Normal cut-in pressure	47 mbar / 25 Torr
Continuous operation pressure limit	4 mbar / 3 Torr
Booster drive	18.5 kW / 25 hp
Pump drive (TEFC)	22.5 kW / 30 hp
Inlet connections	8 inch ASA/ANSI flange
Discharge connections	5 inch NPT
Water inlet/outlet connection	1 inch NPT
Recommended cooling flow @ 30°C/85 °F	18.9 lmin ⁻¹ / 5 galmin ⁻¹
Booster oil capacity (V lube H)	1.9 litre / 0.51 US gal
Microvac oil capacity (V lube F)	76 litre / 20 US gal
Weight	3504 kg / 7725 lbs

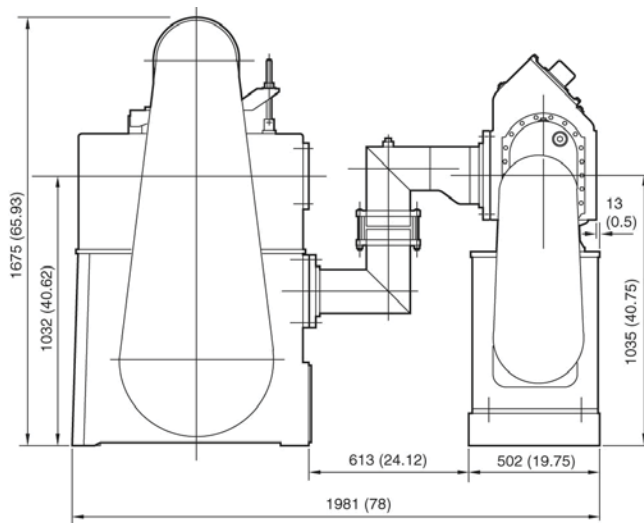
Ordering Information

Product description	Order no.
1739HD 230/460V, 3-ph, 60Hz (230/460V Coil)	90017D039
Accessories Spares	Order no.
Replacement roller bearing	085033795
Replacement oil seal	085018191
Roller bearing with adaptive sleeve	085033794
Valve deck stainless steel clappers	272963002
Replacement 6" booster Mseal - seal kit	607552001
Replacement 6" booster - maintenance kit	607552002
Valve deck springs	274172001

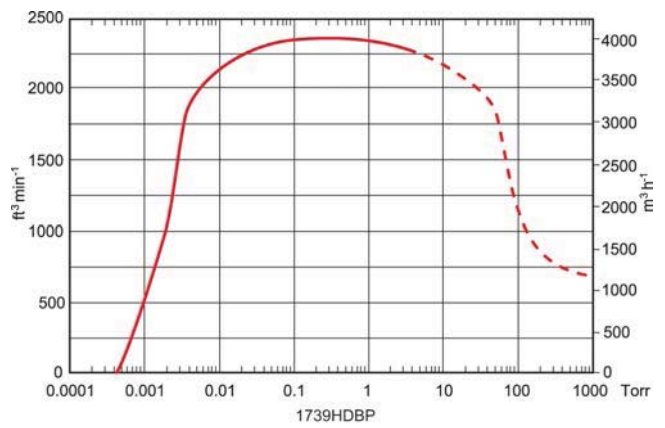
Whether you need to increase the capacity of your existing system or achieve peak performance for a new installation Edwards makes taking advantage of the latest technology easy. These field-proven pumping systems are the workhorse of countless industrial and large chamber applications. Each Stokes 1700 series mechanical booster pump combination includes a Stokes Microvac backing pump and a belt driven, horizontal flow, high vacuum Stokes 6 series mechanical booster pump. In harsh applications where chemical or particulate contamination is present, process isolation boosters are available as an option. Controls for Stokes 1700 series mechanical booster pump combination include a pressure switch, motor starters, overloads, remote booster selection switch and lights for pump running and fault indication.



Dimensions



Performance Curves



Technical Data

Booster displacement	4420 m ³ h ⁻¹ / 2600 ft ³ min ⁻¹
Booster speed	3600 rpm
Booster orientation	Horizontal
Pump displacement	1240 m ³ h ⁻¹ / 730 ft ³ min ⁻¹
Pressure switch required	No
Continuous operation pressure limit	4 mbar / 3 Torr
Booster drive	18.5 kW / 25 hp
Pump drive	22.5 kW / 30 hp
Inlet connections	8 inch ASA/ANSI flange
Discharge connections	5 inch NPT
Water inlet/outlet connection	1 inch NPT
Recommended cooling flow @ 30°C/85°F	18.9 lmin ⁻¹ / 5 galmin ⁻¹
Booster oil capacity (V lube H)	1.9 litre / 0.51 US gal
Microvac oil capacity (V lube F)	76 litre / 20 US gal
Weight	3538 kg / 7800 lbs

Ordering Information

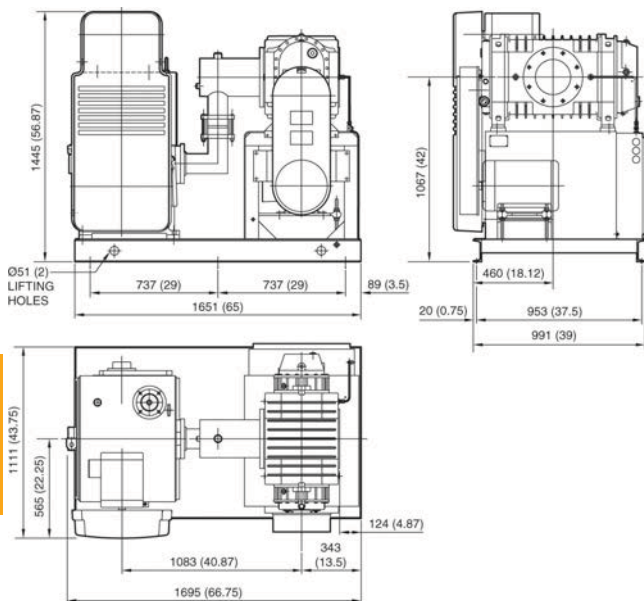
Product description	Order No.
1739HDBP 230/460V, 3-ph, 60Hz (230/460V Coil)	90017D39B
Accessories Spares	Order No.
Replacement 6" booster Mseal - seal kit	607552001
Replacement 6" booster - maintenance kit	607552002
Replacement oil seal	085018191
Replacement roller bearing	085033795
Roller bearing with adaptive sleeve	085033794
Valve deck stainless steel clappers	272963002
Valve deck springs	274172001

Stokes 1754 Mechanical Booster Pump Combination

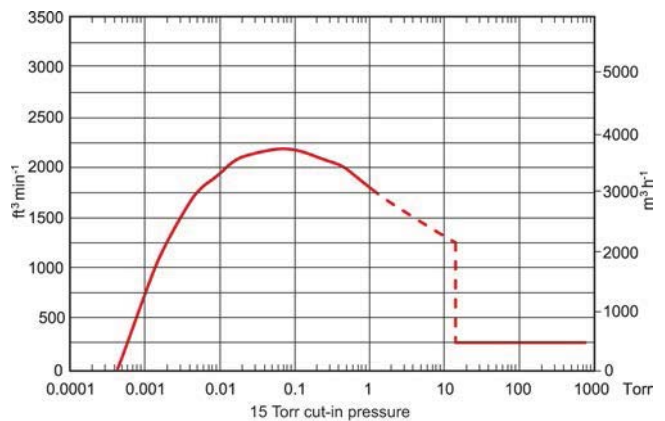


Whether you need to increase the capacity of your existing system or achieve peak performance for a new installation Edwards makes taking advantage of the latest technology easy. These field-proven pumping systems are the workhorse of countless industrial and large chamber applications. Each Stokes 1700 series mechanical booster pump combination includes a Stokes Microvac backing pump and a belt driven, horizontal flow, high vacuum Stokes 6 series mechanical booster pump. In harsh applications where chemical or particulate contamination is present, process isolation boosters are available as an option. Controls for Stokes 1700 series mechanical booster pump combination include a pressure switch, motor starters, overloads, remote booster selection switch and lights for pump running and fault indication.

Dimensions



Performance Curves



Technical Data

Booster displacement	5100 m ³ h ⁻¹ / 3000 ft ³ min ⁻¹
Booster speed	2750 rpm
Booster orientation	Horizontal
Pump displacement	510 m ³ h ⁻¹ / 300 ft ³ min ⁻¹
Pressure switch required	Yes
Normal cut-in pressure	20 mbar / 15 Torr
Continuous operation pressure limit	1.3 mbar / 1 Torr
Booster drive	15 kW / 20 hp
Pump drive	7.5 kW / 10 hp
Inlet connections	8 inch ASA/ANSI flange
Discharge connections	3 inch ASA/ANSI flange, 3 inch NPT
Water inlet connection	½ inch NPT (2)
Water outlet connection	½ inch NPT
Recommended cooling flow @ 30°C/85°F	7.6 lmin ⁻¹ / 2 galmin ⁻¹
Booster oil capacity (V lube H)	1.9 litre / 0.51 US gal
Microvac oil capacity (V lube F)	46 litre / 12 US gal
Weight	1678 kg / 3700 lbs

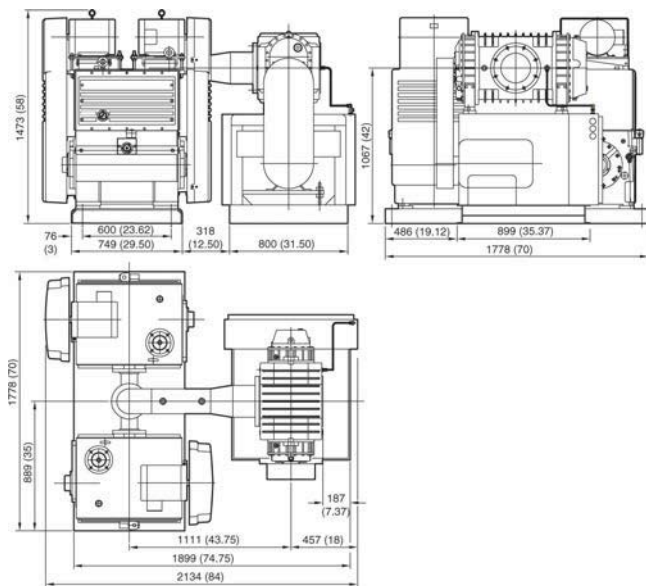
Ordering Information

Product description	Order no.
1754 230/460V, 3-ph, 60Hz (230/460V Coil)	900170054
Accessories Spares	Order no.
Replacement parts kit	429638015
Replacement 6" booster Mseal - seal kit	607552001
Bearings	085019757
Valve deck assembly	607417001
Replacement 6" booster - maintenance kit	607552002

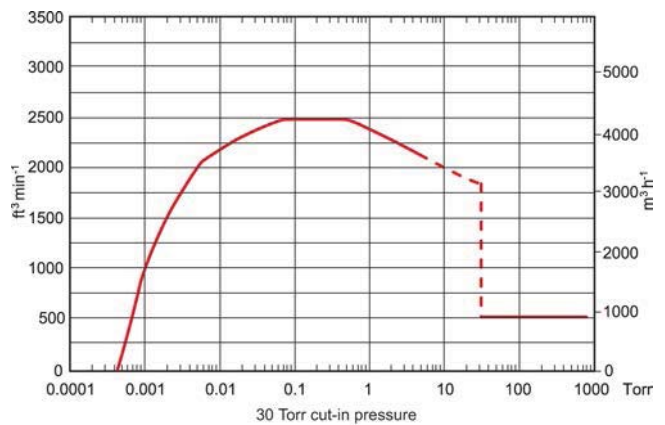
Whether you need to increase the capacity of your existing system or achieve peak performance for a new installation, Edwards makes taking advantage of the latest technology easy. These field-proven pumping systems are the workhorse of countless industrial and large chamber applications. Each Stokes 1700 series mechanical booster pump combination includes a Stokes Microvac backing pump and a belt driven, horizontal flow, high vacuum Stokes 6 series mechanical booster pump. In harsh applications where chemical or particulate contamination is present, process isolation boosters are available as an option. Controls for Stokes 1700 series mechanical booster pump combination include a pressure switch, motor starters, overloads, remote booster selection switch and lights for pump running and fault indication.



Dimensions



Performance Curves



Technical Data

Booster displacement	5100 m ³ h ⁻¹ / 3000 ft ³ min ⁻¹
Booster speed	2750 rpm
Booster orientation	Horizontal
Pump displacement	1020 m ³ h ⁻¹ / 600 ft ³ min ⁻¹
Pressure switch required	Yes
Normal cut-in pressure	40 mbar / 30 Torr
Continuous operation pressure limit	4 mbar / 3 Torr
Booster drive	18.5 kW / 25 hp
Pump drive	7.5 kW (x2) / 10 hp (x2)
Inlet connections	8 inch ASA/ANSI flange
Discharge connections	3 inch ASA/ANSI flange, 3 inch NPT (x2)
Water inlet/outlet connection	½ inch NPT (x2)
Recommended cooling flow @ 30°C/85°F	7.6 l min ⁻¹ (x2) / 2 gal min ⁻¹ (x2)
Booster oil capacity (V lube H)	1.9 litre / 0.51 US gal
Microvac oil capacity (V lube F)	92 litre / 24 US gal
Weight	2722 kg / 6000 lbs

Ordering Information

Product description	Order no.
1754HC 230/460V, 3-ph, 60Hz (230/460V Coil)	900170055
Accessories Spares	Order no.
Replacement parts kit	429638015
Bearings	085019757
Valve deck assembly	607417001
Replacement 6" booster Mseal - seal kit	607552001
Replacement 6" booster - maintenance kit	607552002